

# Kollmorgen Automation Suite

## 30 Minutes to Motion



**Document Edition: H, September 2016**

Valid for KAS Software Revision 2.11

Part Number: 959714

Keep all manuals as a product component during the life span of the product.  
Pass all manuals to future users / owners of the product.

**KOLLMORGEN**<sup>®</sup>

*Because Motion Matters™*

# Trademarks and Copyrights

## Copyrights

Copyright © 2009-2016 Kollmorgen™

Information in this document is subject to change without notice. The software package described in this document is furnished under a license agreement or non-disclosure agreement. The software may be used or copied only in accordance with the terms of those agreements.

This document is the intellectual property of Kollmorgen™ and contains proprietary and confidential information. The reproduction, modification, translation or disclosure to third parties of this document (in whole or in part) is strictly prohibited without the prior written permission of Kollmorgen™.

## Trademarks

KAS and AKD are registered trademarks of [Kollmorgen™](#).

SERVOSTAR is a registered trademark of Kollmorgen™.

[Kollmorgen™](#) is part of the [Danaher Motion](#) company.

Windows® is a registered trademark of Microsoft Corporation

EnDat is a registered trademark of [Dr. Johannes Heidenhain GmbH](#).

[EtherCAT®](#) is registered trademark of [Ethercat Technology Group](#).

[PLCopen®](#) is an independent association providing efficiency in industrial automation.

INtime® is a registered trademark of [TenAsys® Corporation](#).

Codemeter is a registered trademark of [WIBU-Systems AG](#).

All product and company names are trademarks™ or registered® trademarks of their respective holders. Use of them does not imply any affiliation with or endorsement by them.

Kollmorgen Automation Suite is based on the work of:

- [AjaxFileUpload](#), software (distributed under the MPL License – [see terms](#) – see "Licenses" [for terms](#)).
- [Apache log4net](#) library for output logging (distributed under the Apache License – see "Licenses" [for terms](#)).
- bsdtar and libarchive2, a utility and library to create and read several different archive formats (distributed under the terms of the BSD License – [see terms](#) – see "Licenses" [for terms](#)).
- bzip2.dll, a data compression library (distributed under the terms of the BSD License – see "Licenses" [for terms](#)).
- [Curl](#) software library
- [DockPanel Suite](#), a docking library for .Net Windows Forms (distributed under the MIT License – [see terms](#) – see "Licenses" [for terms](#)).
- [FileHelpers](#) library to import/export data from fixed length or delimited files (see "Licenses" [for terms](#)).
- GCC Canadian Cross Compiler is used by the KAS IDE. The GCC Canadian Cross Compiler is distributed under the [terms](#) of the GNU General Public License (<http://www.gnu.org/licenses/gpl.html>). The GCC Canadian Cross Compiler source files, copyright notice, and readme are [available on KDN](#).
- [GNU gzip](#)<sup>1</sup> ([www.gnu.org](http://www.gnu.org)) is used by the PDMM/PCMM (distributed under the [terms](#) of the GNU General Public License <http://www.gnu.org/licenses/gpl-2.0.html>).
- [GNU Tar](#)<sup>2</sup> ([www.gnu.org](http://www.gnu.org)) is used by the PDMM/PCMM (distributed under the [terms](#) of the GNU General Public License <http://www.gnu.org/licenses/gpl-2.0.html>).
- Icons provided by [Oxygen Team](#), (distributed under the [terms](#) of the GNU Lesser General Public License <https://www.gnu.org/licenses/lgpl.html>).

---

<sup>1</sup>Copyright (C) 2007 Free Software Foundation, Inc. Copyright (C) 1993 Jean-loup Gailly. This is free software. You may redistribute copies of it under the terms of the GNU General Public License <<http://www.gnu.org/licenses/gpl.html>>. There is NO WARRANTY, to the extent permitted by law. Written by Jean-loup Gailly.

<sup>2</sup>Copyright (C) 2007 Free Software Foundation, Inc. License GPLv2+: GNU GPL version 2 or later <<http://gnu.org/licenses/gpl.html>> This is free software: you are free to change and redistribute it. There is NO WARRANTY, to the extent permitted by law. Written by John Gilmore and Jay Fenlason.

- [jQuery.Cookies](#), a Javascript library for accessing and manipulating HTTP cookies in the web browser (distributed under the MIT License – see "Licenses" [for terms](#)).
- [jquery-csv](#), a library for parsing CSV files in javascript (distributed under the MIT license <http://www.opensource.org/licenses/mit-license.php>).
- [jQuery File Tree](#), a file browser plugin (distributed under the MIT License – see "Licenses" [for terms](#)).
- [jQueryRotate](#), a plugin which rotates images (img html objects) by a given angle on web pages (distributed under the MIT License, <http://opensource.org/licenses/mit-license.php>).
- JsonCpp software (distributed under the MIT License – [see terms](#) see <http://jsoncpp.sourceforge.net/LICENSE> for terms).
- [LZMA SDK](#) (<http://www.7-zip.org/sdk.html>), used to compress crash dump information (available as public domain).
- [Mongoose](#) v3.7, an embedded web server library (distributed under the MIT License – see "Licenses" [for terms](#)).
- [MVVM Light Toolkit](#) components for Model – View –ViewModel patterns with Windows Presentation Foundation (distributed under the MIT License – see "Licenses" [for terms](#)).
- [pugixml](#), an XML and XPath parsing library (distributed under the MIT License – see "Licenses" [for terms](#)).
- [Qwt](#) project (distributed under the terms of the GNU Lesser General Public License – see "Licenses" [for terms](#)).
- [U-Boot](#), a universal boot loader is used by the AKD-PDMM (distributed under the [terms](#) of the GNU General Public License, <http://www.gnu.org/licenses/gpl-2.0.html>). The U-Boot source files, copyright notice, and readme are available on the distribution disk that is included with the AKD-PDMM.
- [ZedGraph](#) class library, user control, and web control for .NET (distributed under the LGPL License – see "Licenses" [for terms](#)).
- [Zlib](#) software library
- [Zlib1.dll](#), a data compression library (distributed under the terms of the BSD License – [see terms](#) – see "Licenses" [for terms](#)).

All other product and brand names listed in this document may be trademarks or registered trademarks of their respective owners.

## Disclaimer

The information in this document (Version H published on 10/5/2016) is believed to be accurate and reliable at the time of its release. Notwithstanding the foregoing, Kollmorgen assumes no responsibility for any damage or loss resulting from the use of this help, and expressly disclaims any liability or damages for loss of data, loss of use, and property damage of any kind, direct, incidental or consequential, in regard to or arising out of the performance or form of the materials presented herein or in any software programs that accompany this document.

All timing diagrams, whether produced by Kollmorgen or included by courtesy of the PLCopen organization, are provided with accuracy on a best-effort basis with no warranty, explicit or implied, by Kollmorgen. The user releases Kollmorgen from any liability arising out of the use of these timing diagrams.

# 1 Table of Contents

---

<b>1</b>	<b>Table of Contents</b>	<b>4</b>
<b>2</b>	<b>Key Features</b>	<b>5</b>
2.1	KAS IDE	5
2.2	Main Tools	5
<b>3</b>	<b>Installing KAS IDE</b>	<b>7</b>
3.1	System Requirements	7
3.2	Download	7
3.3	Installation Procedure	8
3.3.1	User Data	9
<b>4</b>	<b>Exploring KAS Workspace</b>	<b>10</b>
4.1	Windows and Panels Overview	10
4.1.1	Main Window	10
4.1.1.1	About toolboxes	10
4.1.2	Project Explorer	11
4.1.3	Libraries	11
4.1.3.1	Function Blocks	11
4.1.3.2	Controls	12
4.1.3.3	Properties	12
4.1.4	Variables tab	12
4.1.5	Information and Logs	14
<b>5</b>	<b>Creating An Application</b>	<b>15</b>
5.1	Creating a Project	15
5.1.1	Add the Controller	15
5.1.2	Configure the Controller	17
5.2	Compile the Application	18
5.3	Launch KAS Simulator	18
5.4	Connect to the Controller	18
5.4.1	Actions to Prevent Compatibility Issues	18
5.5	Download the Application	20
5.6	Device Control	21
5.7	Operate the Control Panel	21
5.7.1	About KAS Simulator Display	21
5.8	Exiting Simulation Mode	22

## 2 Key Features

Kollmorgen Automation Suite is Kollmorgen an all-in-one solution for designing, developing and maintaining automation systems. It integrates the three main functionalities of a machine:

- Interface with machine operators (HMI)
- Logic handling of the machine (IEC 61131-3 Soft PLC)
- Precise control of all moving parts (Motion control)

### 2.1 KAS IDE

KAS comes with a powerful Integrated Development Environment (IDE) which allows you to:

- Create new application project using KAS predefined or custom application **templates**
- Define the machine hardware architecture as well as the machine program
- Develop PLC programs using the five **IEC 61131-3** programming languages (ST, IL, FFLD, FBD and SFC) and KAS function block libraries dedicated to motion
- Centrally manage all IEC 61131-3 variables with KAS **variable dictionary** and map logical variables to physical **inputs and outputs**
- Easily set up **HMI panels** and map graphical object to IEC 61131-3 variables

### 2.2 Main Tools




Tool	Description
<b>Pipe Network Editor</b>	Graphical tool describing the mechanical System into the logical world based on an one to one translation
<b>Cam profile Editor</b>	Allows you to create or modify a profile definition that describes the position evolution of the cam in a 2D graphical format
<b>Softscope</b>	Allows to view in a two-dimensional graph one or more variables' evolution (vertical axis) across the time (horizontal axis)
<b>Simulator</b>	Allows you to develop your application without any hardware available

This page intentionally left blank.

## 3 Installing KAS IDE

### 3.1 System Requirements

KAS IDE minimum system requirements:

Element	Description
<b>Operating System</b>	Microsoft® Windows® 7 SP1 (32 or 64-bit). For optimal performance, please be sure your operating system is fully updated with the latest patches.
<b>Processor type</b>	Intel® Pentium® M or equivalent processor at 1.5 GHz or greater.
<b>Memory</b>	1 GB RAM or greater (which is recommended for complex applications)
<b>Storage</b>	1 GB hard drive or compact flash space
<b>Display</b>	WXGA+ (1440 x 900) or higher-resolution monitor with 24-bit color. See Note #1 below.
<b>Connectivity</b>	1 Ethernet port, at either 100Mbps/s or 1Gbits/s. See Note #2 below.
<b>Web Browser</b>	A modern web browser is required to access the web server and online help. We recommend Internet Explorer (IE9 or later, see Note #3)  , Mozilla FireFox  , or Google Chrome  .

#### NOTE

1. Better results are achieved with OpenGL and 3D cards.
2. A 100Mb network is required in order to allow the IDE to Runtime communication to work in all conditions. The AKDWorkBench AutoTuner and Scope both require 100Mb of bandwidth to function properly.
3. IE9 should be considered a minimum. Later versions of the browser are more compliant with web standards and afford better performance and compatibility.

#### TIP

See the topic Connect Remotely for information about the ports used by KAS which may need to be opened to support connecting from an external network.

#### IMPORTANT

KAS IDE and KAS Simulator should not be installed on a Kollmorgen Industrial PC (PAC). The IDE and Simulator are for use on PCs only.

### 3.2 Download

The latest version of the Kollmorgen Automation Suite is available at [www.kollmorgen.com](http://www.kollmorgen.com).

### 3.3 Installation Procedure

#### How to proceed if you have a CD/DVD

After inserting the installation CD or DVD, a web browser automatically displays the installation start page.

#### TIP

If the installation start page does not automatically display, double-click on the file **Index.html** file.

To start the installation of Kollmorgen Automation Suite, click the corresponding link and confirm that you want to execute **KAS-Setup.exe**.

Follow the procedure below to proceed with the KAS IDE software installation.

#### IMPORTANT

Installation of the KAS IDE can require you to change your firewall setting. If you do not have sufficient privileges to configure your firewall, you must stop the relevant Windows Service.

Once KAS has finished downloading, complete the following installation steps:

1. Double-click the **KAS-Setup.exe** file to run the installation Wizard.

#### NOTE

A Security Warning dialog displays as a result of security certification. Do not be alarmed.

2. Click **Run** to start the installation Wizard.
3. While the setup is loading, wait for the setup splash screen to vanish after being displayed.
4. If a previous version of the KAS IDE is installed then an uninstall notice is displayed. The previous version must be uninstalled before the installation can continue. All content of the previous repository is deleted during the uninstall.
5. The following Welcome Wizard displays with the version and build number of the KAS IDE. Click **Next** to continue.
6. Review the License Agreement and click "I Agree" to continue the installation.

#### NOTE

You must accept the agreement to install Kollmorgen Automation Suite.

7. Select the **Development Environment** installation type from the drop-down menu.

Installation type	Description
<b>Development Environment</b>	This kind of installation is typically used for creating and developing a new application. When you need to install the KAS IDE and the KAS Runtime Simulator, you can select Development Environment as the type of installation.
<b>Run-time Industrial PC</b>	This installation is typically used when you have an AKC (PAC). You are able to view and run your application. You need to install Kollmorgen Visualization Builder and the KAS Runtime. Kollmorgen Visualization Builder is specially designed to view and control your application.  The KAS Runtime only executes the application.
<b>Custom</b>	You can manually select the specific KAS components to install.

8. Click **Next** to access the destination folder.
9. Click **Browse** to specify a custom install directory or accept the recommended default location. When finished, click **Install** to continue.

#### TIP

Kollmorgen strongly recommends accepting the default destination folder under C:\Program Files\Kollmorgen\Kollmorgen Automation Suite\Kollmorgen Automation Suite.

10. The software installation begins. Wait until the installation process is complete.
11. You are done; click **Finish**.

** TIP**

Adding the **KAS IDE** application as an exception in your firewall settings is recommended to avoid security issues

### 3.3.1 User Data

User-generated data such as log files, project sources, field bus configurations, function blocks, etc. are stored in the Windows User directory and are maintained between installations. This applies to files on PACs, PDMs, PCMMs, as well as Simulator files.

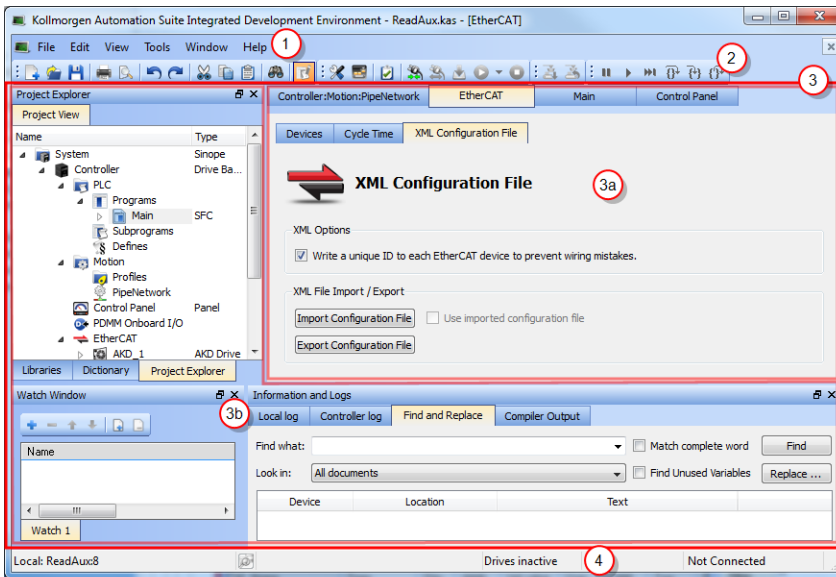
## 4 Exploring KAS Workspace

This chapter will help you become familiar with the KAS IDE.

### 4.1 Windows and Panels Overview

#### 4.1.1 Main Window

The KAS IDE interface provides an all-in-one-window integrated workspace.



**Figure 3-1:** KAS IDE Main Window

The main view in the Integrated Development Environment (IDE) is a Multiple Document Interface (MDI) environment. This provides an easy-to-use and customizable view; including the capability to hide, enlarge or overlap windows in order to optimize visibility.

The main view is saved when you exit the application. This ensures that your workspace remains the same each time you open and use the KAS IDE.

The KAS IDE main window contains the following items:

- Menu bar (see call out 1)
- Toolbar 2 A toolbar is a little bar with icons which is usually located under the menu bar of a window.
- Workspace 3 which contains:
  - A specific area dedicated to displaying the workspace children windows 3a
  - Several toolboxes 3b A toolbox is a child window that provides you with some functions to perform specific tasks.
- Status bar at the bottom 4 displaying the current state of the target

##### 4.1.1.1 About toolboxes

The available toolboxes include:

- Project Explorer
- "Libraries" (→ p. 11)
- Dictionary
- "Information and Logs" (→ p. 14)

### 4.1.2 Project Explorer

The Project Explorer toolbox is a window that displays machine application information in a tree-structure representation. This window contains all the following items used to design, implement, test, and document the application.

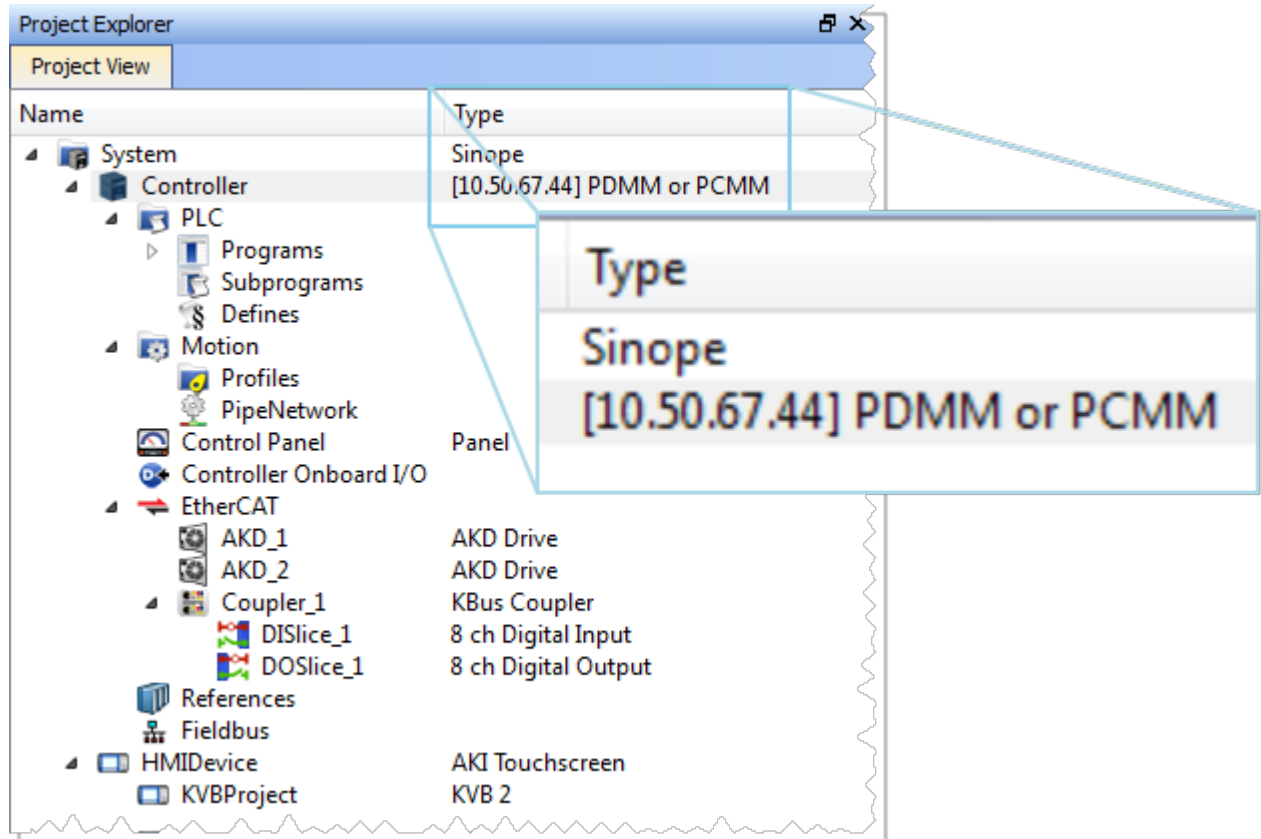


Figure 3-2: Project Explorer

### 4.1.3 Libraries

This toolbox contains several tabs to access all the functions of the available libraries.

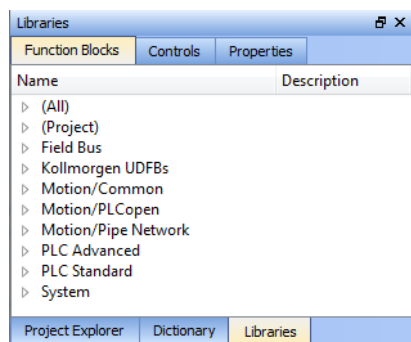


Figure 3-3: Libraries Toolbox

#### 4.1.3.1 Function Blocks

This tab displays all the available libraries shown in a tree-structure representation and gathered by categories. You can expand a library to access all its functions. A short description of each function is also available.

- PLC Standard
- PLC Advanced
- Motion/Pipe Network
- Motion/PLCopen
- Field Bus
- System
- Kollmorgen UDFBs

#### 4.1.3.2 Controls

This tab displays all the controls available for the HMI design.

#### 4.1.3.3 Properties

This tab displays all the properties of an HMI control.

#### 4.1.4 Variables tab

The Variables tab is used to show all the variables defined within the project. All the variable details are displayed in order to show the variable types, dimensions, attributes, etc.

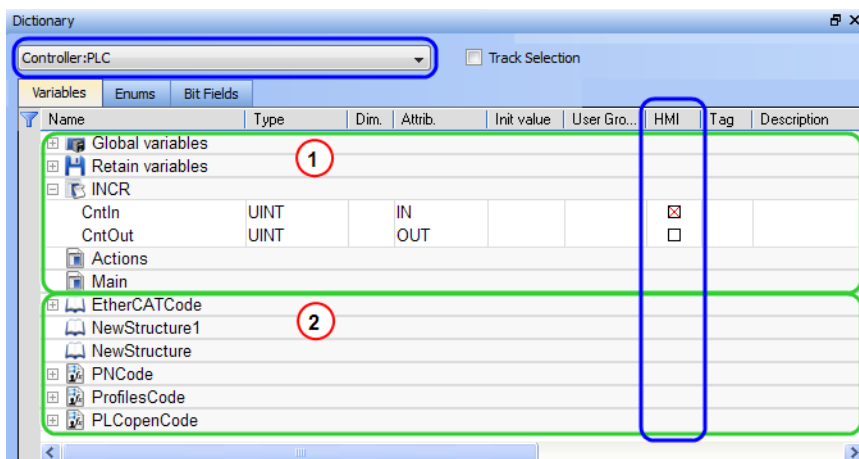


Figure 3-4: Dictionary Toolbox

The list of variables is split into two parts:

- All the Variables at the top 1
- All the Structures at the bottom 2

#### About the Dictionary's contextual menu.

Command	Description
<b>Undo</b>	Undo the last action performed on the Dictionary
<b>Redo</b>	Redo the last undone action
<b>Add Variable</b>	Add a new variable in the selected level (Global, Retain, program). This automatically creates a new variable called NewVar with type BOOL  For a Function or UDFB, you can specify input and output parameters (for more details, see "Define Parameters and Private Variables")

Command	Description																																																																																																																																																																																																												
<b>Rename variables</b>	This function can either replace a section of matching variables or append text to the variables' names. See Rename Variables																																																																																																																																																																																																												
<b>Edit variables as text</b>	This function will open a text editing dialog, allowing you to edit the variables found in the group as text using IEC 61131-3 syntax. See Editing Variables as Text for more information.																																																																																																																																																																																																												
<b>Browse variable</b>	This function allows you to browse all instances of a variable. See Browse Variable Tab for more information.																																																																																																																																																																																																												
<b>Add Structure</b>	Used to have a new complex type. A structure named NewStructure is created and variables can be dragged into it (for more details, see "Complex Structures")																																																																																																																																																																																																												
<b>Rename Structure</b>	Rename the selected structure																																																																																																																																																																																																												
<b>Copy</b>	Copy a variable																																																																																																																																																																																																												
<b>Paste</b>	Paste the copied variable to the selected level																																																																																																																																																																																																												
<b>Delete</b>	Delete the selected variable. A deletion can also be performed by pressing the Delete key on the keyboard																																																																																																																																																																																																												
<b>Find all</b>	This function will find all instances of the specified variable and open the results in the Find and Replace tab.																																																																																																																																																																																																												
<b>Open UDFB</b>	Open the selected UDFB instance (for more details, see "Monitoring UDFBs")																																																																																																																																																																																																												
<b>Plug On Channel</b> ...	<p>Plug the selected variable on a channel. This command opens a dialog used to configure the variable plug operation.</p> <p>This command is enabled when your application is connected and running, and if the type of variable is eligible for the softscope (i.e. BOOL, INT, SINT, DINT, LINT, UINT, USINT, UDINT, ULINT, BYTE, WORD, DWORD, LWORD, TIME and LREAL, as long as they are not in a UDFB instance).</p>																																																																																																																																																																																																												
<b>Unplug All Channels</b>	Unplug all plugged probes from the softscope																																																																																																																																																																																																												
<b>Variable I/O mapping</b>	Connect a variable to an I/O.																																																																																																																																																																																																												
<b>Print Dictionary</b> ...	<p>Print all the variables displayed in the Dictionary and sorted by programs. The columns display the Name, Type, Dimension, Initial Value, and Attributes</p> <table border="1"> <thead> <tr> <th>Name</th> <th>Type</th> <th>Dim</th> <th>InitVal</th> <th>R</th> <th>E</th> </tr> </thead> <tbody> <tr> <td colspan="6"><b>(Global)</b></td> </tr> <tr> <td>TravelSpeed</td> <td>LREAL</td> <td>0</td> <td>LREAL#0</td> <td></td> <td></td> </tr> <tr> <td>MasterAbsPos</td> <td>LREAL</td> <td>0</td> <td>LREAL#0</td> <td></td> <td></td> </tr> <tr> <td>MasterDeltaPos</td> <td>LREAL</td> <td>0</td> <td>LREAL#90</td> <td></td> <td></td> </tr> <tr> <td>MachineSpeed</td> <td>LREAL</td> <td>0</td> <td>LREAL#0</td> <td></td> <td></td> </tr> <tr> <td>Axis1Status</td> <td>DINT</td> <td>0</td> <td></td> <td></td> <td></td> </tr> <tr> <td>Axis2Status</td> <td>DINT</td> <td>0</td> <td></td> <td></td> <td></td> </tr> <tr> <td>MachineState</td> <td>DINT</td> <td>0</td> <td>0</td> <td></td> <td></td> </tr> <tr> <td>bMasterAbs</td> <td>BOOL</td> <td>0</td> <td>FALSE</td> <td></td> <td></td> </tr> <tr> <td>bMasterRel</td> <td>BOOL</td> <td>0</td> <td>FALSE</td> <td></td> <td></td> </tr> <tr> <td>bEStop</td> <td>BOOL</td> <td>0</td> <td>FALSE</td> <td></td> <td></td> </tr> <tr> <td>bLedStatus</td> <td>BOOL</td> <td>4</td> <td></td> <td></td> <td></td> </tr> <tr> <td>Profiles</td> <td>ProfilesCode</td> <td>0</td> <td></td> <td></td> <td></td> </tr> <tr> <td>EtherCAT</td> <td>EtherCATCode</td> <td>0</td> <td></td> <td></td> <td>R</td> </tr> <tr> <td>PipeNetwork</td> <td>PNCCode</td> <td>0</td> <td></td> <td></td> <td></td> </tr> <tr> <td colspan="6"><b>(Retain)</b></td> </tr> <tr> <td>LastAxisPos</td> <td>LREAL</td> <td>0</td> <td></td> <td></td> <td></td> </tr> <tr> <td colspan="6"><b>MachineLogic</b></td> </tr> <tr> <td>lastTravelSpeed</td> <td>LREAL</td> <td>0</td> <td>LREAL#0</td> <td></td> <td></td> </tr> <tr> <td>lastMachineSpeed</td> <td>LREAL</td> <td>0</td> <td>LREAL#0</td> <td></td> <td></td> </tr> <tr> <td colspan="6"><b>ProfilesCode</b></td> </tr> <tr> <td>cmdID</td> <td>DINT</td> <td>0</td> <td></td> <td></td> <td></td> </tr> <tr> <td colspan="6"><b>PNCCode</b></td> </tr> <tr> <td>cmdID</td> <td>DINT</td> <td>0</td> <td></td> <td></td> <td></td> </tr> <tr> <td>MASTER</td> <td>DINT</td> <td>0</td> <td></td> <td></td> <td></td> </tr> <tr> <td>GEAR1</td> <td>DINT</td> <td>0</td> <td></td> <td></td> <td></td> </tr> <tr> <td>CNV1</td> <td>DINT</td> <td>0</td> <td></td> <td></td> <td></td> </tr> <tr> <td>AMIS1</td> <td>DINT</td> <td>0</td> <td></td> <td></td> <td></td> </tr> <tr> <td>GEAR2</td> <td>DINT</td> <td>0</td> <td></td> <td></td> <td></td> </tr> <tr> <td>CNV2</td> <td>DINT</td> <td>0</td> <td></td> <td></td> <td></td> </tr> <tr> <td>AMIS2</td> <td>DINT</td> <td>0</td> <td></td> <td></td> <td></td> </tr> <tr> <td>PipeAMIS1</td> <td>DINT</td> <td>0</td> <td></td> <td></td> <td></td> </tr> <tr> <td>PipeAMIS2</td> <td>DINT</td> <td>0</td> <td></td> <td></td> <td></td> </tr> </tbody> </table>	Name	Type	Dim	InitVal	R	E	<b>(Global)</b>						TravelSpeed	LREAL	0	LREAL#0			MasterAbsPos	LREAL	0	LREAL#0			MasterDeltaPos	LREAL	0	LREAL#90			MachineSpeed	LREAL	0	LREAL#0			Axis1Status	DINT	0				Axis2Status	DINT	0				MachineState	DINT	0	0			bMasterAbs	BOOL	0	FALSE			bMasterRel	BOOL	0	FALSE			bEStop	BOOL	0	FALSE			bLedStatus	BOOL	4				Profiles	ProfilesCode	0				EtherCAT	EtherCATCode	0			R	PipeNetwork	PNCCode	0				<b>(Retain)</b>						LastAxisPos	LREAL	0				<b>MachineLogic</b>						lastTravelSpeed	LREAL	0	LREAL#0			lastMachineSpeed	LREAL	0	LREAL#0			<b>ProfilesCode</b>						cmdID	DINT	0				<b>PNCCode</b>						cmdID	DINT	0				MASTER	DINT	0				GEAR1	DINT	0				CNV1	DINT	0				AMIS1	DINT	0				GEAR2	DINT	0				CNV2	DINT	0				AMIS2	DINT	0				PipeAMIS1	DINT	0				PipeAMIS2	DINT	0			
Name	Type	Dim	InitVal	R	E																																																																																																																																																																																																								
<b>(Global)</b>																																																																																																																																																																																																													
TravelSpeed	LREAL	0	LREAL#0																																																																																																																																																																																																										
MasterAbsPos	LREAL	0	LREAL#0																																																																																																																																																																																																										
MasterDeltaPos	LREAL	0	LREAL#90																																																																																																																																																																																																										
MachineSpeed	LREAL	0	LREAL#0																																																																																																																																																																																																										
Axis1Status	DINT	0																																																																																																																																																																																																											
Axis2Status	DINT	0																																																																																																																																																																																																											
MachineState	DINT	0	0																																																																																																																																																																																																										
bMasterAbs	BOOL	0	FALSE																																																																																																																																																																																																										
bMasterRel	BOOL	0	FALSE																																																																																																																																																																																																										
bEStop	BOOL	0	FALSE																																																																																																																																																																																																										
bLedStatus	BOOL	4																																																																																																																																																																																																											
Profiles	ProfilesCode	0																																																																																																																																																																																																											
EtherCAT	EtherCATCode	0			R																																																																																																																																																																																																								
PipeNetwork	PNCCode	0																																																																																																																																																																																																											
<b>(Retain)</b>																																																																																																																																																																																																													
LastAxisPos	LREAL	0																																																																																																																																																																																																											
<b>MachineLogic</b>																																																																																																																																																																																																													
lastTravelSpeed	LREAL	0	LREAL#0																																																																																																																																																																																																										
lastMachineSpeed	LREAL	0	LREAL#0																																																																																																																																																																																																										
<b>ProfilesCode</b>																																																																																																																																																																																																													
cmdID	DINT	0																																																																																																																																																																																																											
<b>PNCCode</b>																																																																																																																																																																																																													
cmdID	DINT	0																																																																																																																																																																																																											
MASTER	DINT	0																																																																																																																																																																																																											
GEAR1	DINT	0																																																																																																																																																																																																											
CNV1	DINT	0																																																																																																																																																																																																											
AMIS1	DINT	0																																																																																																																																																																																																											
GEAR2	DINT	0																																																																																																																																																																																																											
CNV2	DINT	0																																																																																																																																																																																																											
AMIS2	DINT	0																																																																																																																																																																																																											
PipeAMIS1	DINT	0																																																																																																																																																																																																											
PipeAMIS2	DINT	0																																																																																																																																																																																																											

**How do I modify parameters of a variable?**

Mode	Description
One Parameter	Assuming you are in the <b>cell</b> edition mode, double-click on the parameter
All the parameters are at the same time	Assuming you are in the <b>row</b> edition mode, double-click in any parameter to open the dialog box for variable configuration as shown below.  For more details on parameters, see "Variables".

**4.1.5 Information and Logs**

The Information and Log window is used to identify current state status and can be used to identify operational errors, compilation errors, and also to quickly assist you in finding areas of the workspace or program variables.

This window contains different tabs that provide:

- Log messages (Local or Controller) including Log Messages Settings
- A system search function
- A list of breakpoints
- A state report on the program compiler

## 5 Creating An Application

This exercise helps you become familiar with KAS application environment. The Control Panel is used to create a simulated motion on two axes.

In this exercise, you will perform the following steps:

- Create a new KAS project
- Compile the project
- Start the KAS Simulator and download the project to it
- Start the application via the Control Panels and observe the functions in the KAS Simulator

To create the simulated motion, follow this chapter step by step.

### 5.1 Creating a Project

Step	Description
1	To start your project, you have to add a controller, choose which motion engine your application is based on (Pipe Network or PLCopen), and set the properties of the controller
2	Add all AKD drives being part of your EtherCAT network and define all their parameters
3	Add all the IO couplers and slices being part of your EtherCAT network
4	Configure EtherCAT motion bus by mapping all the devices and setting the cycle time
5	Create programs with the five programming languages that comply with the IEC 61131-3 standard
6	Create variables, which can also be arrays or complex structures, and monitor them with the Dictionary, or the variable editor
7	Create functions and function blocks that can be called from your programs
8	Use constant definitions to ease the maintenance of your code
9	Use the functions available in the pre-defined libraries
10	Create your custom libraries containing your PLC code that you can use afterwards in different projects
11	Map digital or analog inputs and outputs, that are on the EtherCAT motion bus, to PLC variables
12	Design motion with pipe blocks in the pipe network or with PLCopen axis
13	Create Cam Profiles that you can associate to a cam pipe block
14	Define the number of cycles between successive executions of the PLC programs, and configure the programs priority
15	Add an HMI Device, design the KVB Panel, and map the variables

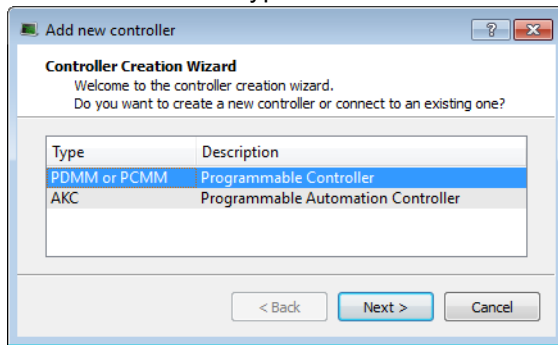
#### **ⓘ IMPORTANT**

Each time you modify your project, you have to recompile and download the new version to save your modifications on the target.

#### 5.1.1 Add the Controller

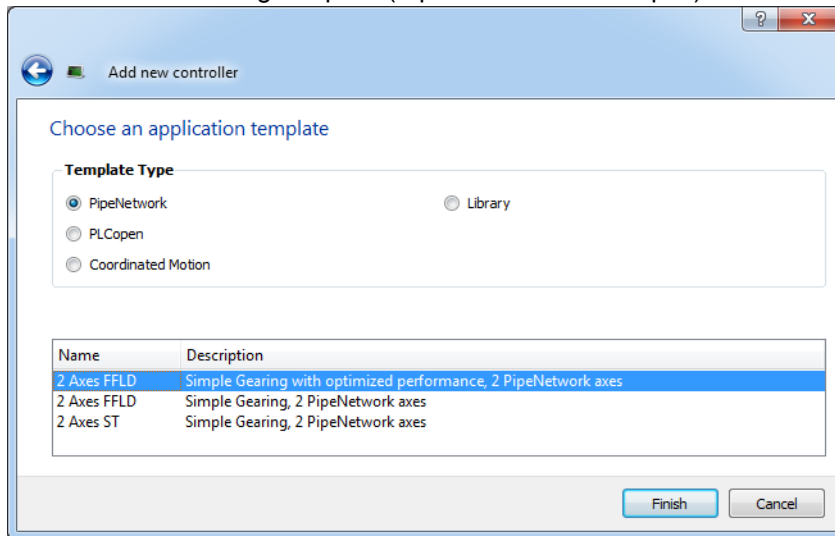
To add a controller to your project:

- Click the **New** command in the **File** menu to start the Controller Creation Wizard
- Select the controller type within the list and click the **Next** button



**Figure 4-1:** Select a Controller

- Choose the motion engine option (Pipe Network or PLCopen) and select the application template

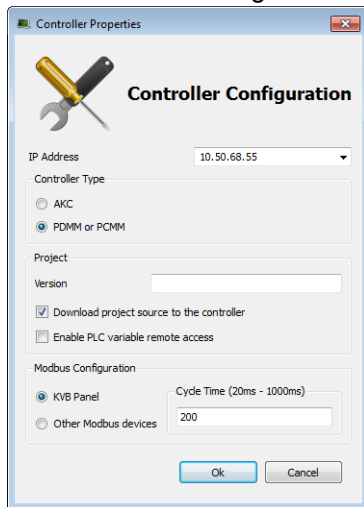


**Figure 4-2:** Select an Application Template

- Click the **Finish** button
- Click the **Save As** command in the **File** menu
- Define the Project Name and its Location
- Click **OK**

## 5.1.2 Configure the Controller

The controller is configured using the Controller Properties dialog box.



To set-up the controller:

1. In the Project Explorer, right-click on the new controller to open the contextual menu
2. Select the **Properties** command
3. Define the IP Address
4. Choose the controller type
5. (Optional) Choose whether the project's source code should be downloaded to the controller. This is enabled by default and your preference is saved with the project. Disabling this option means a comparison of source on the controller and in the IDE will not be available.
6. (Optional) Choose whether PLC variables may be read/written via an HTTP connection. this requires that the source be downloaded to the controller. By default this option is disabled so unauthorized changes may not be made.

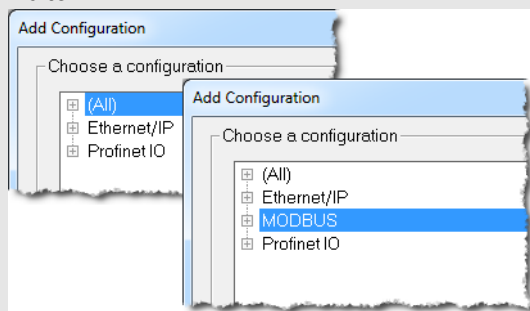
### **TIP**

Be sure to recompile the application before downloading it to the controller.

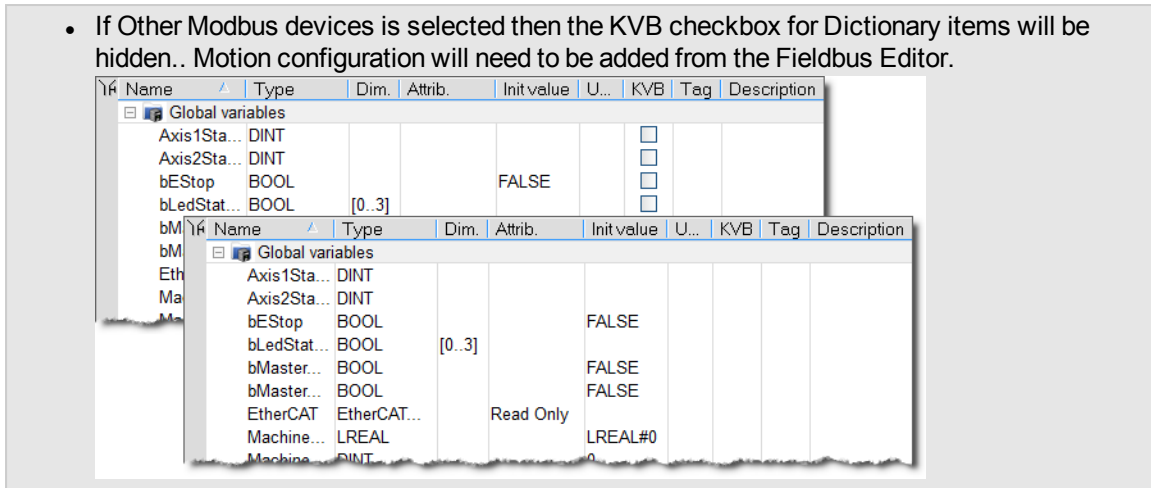
7. Select whether Modbus will go to a KVB Panel or be handled by another Modbus device, and set the **Cycle Time** (the communication update frequency, see "Modbus Slave" for more information).

### **NOTE**

- If KVB Panel is selected there will be no node to add a Modbus configuration in the Fieldbus Editor.



- If Other Modbus devices is selected then the KVB checkbox for Dictionary items will be hidden.. Motion configuration will need to be added from the Fieldbus Editor.



8. Click **OK**

## 5.2 Compile the Application

After creating all the elements of your project, you are ready to compile it.

You can compile your project with the compile icon  in the toolbar (**Ctrl+B** shortcut).

## 5.3 Launch KAS Simulator

If you want to simulate your application, open **All Programs** on your computer and start the KAS Simulator application located under the **Kollmorgen** folder and the **Kollmorgen Automation Suite** subfolder.

Once the program opens, adjust your desktop preferences (position, size, etc.)

If you want to run your project on a physical device, start the KAS Runtime on the target controller.

## 5.4 Connect to the Controller




Figure 4-3: The Device Toolbar

### NOTE

If the previous download failed (due to events such as the Ethernet being disconnected or the controller being turned off), you will not be able start your application. Additionally:

- no version information is shown in the web server or status bar
- the Start, Cold Start and Download buttons are not available on the web server
- if the PDMM or PCMM tries to auto-start, an E24 error is flashed on the 7-segment display.

Review the Controller logs for more information.

Ensure the Simulated device mode is active (the icon  must be selected)

To establish the connection with the target controller, click the Connect Device icon .

### 5.4.1 Actions to Prevent Compatibility Issues



The software versions of the KAS IDE and the KAS Runtime have to match to avoid compatibility problems.

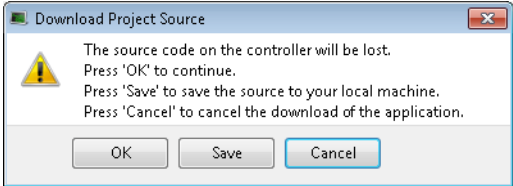
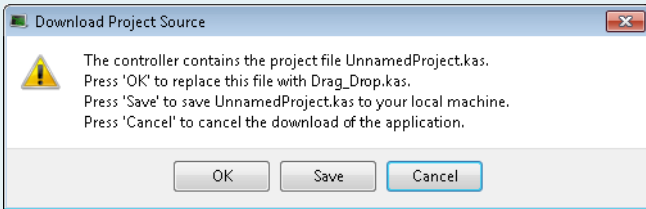
** TIP**

The software versions of the KAS IDE and the KAS Runtime are also available in the local [log](#) messages (the level for this message is INFO).

When another KAS IDE is already connected to the controller, a warning is displayed and the connection is discarded to prevent any conflict.

## 5.5 Download the Application

- Click the *Compile and Download*  or the *Download*  button.  
The application is compiled and downloaded or just downloaded to the controller.
  - If you enabled the "Download Project Source in the controller" option in the Controller Properties dialog box (see "Configure the Controller" (→ p. 17)) then the source code is also copied to the controller.
  - If you disabled the "Download Project Source in the controller" option and the controller has project source loaded you will be prompted with a message. The message presented will vary, based on whether your current project and the project on the controller have the same name or not.

Project Names	Message	Actions
Same name		<p><b>OK:</b> Source on controller is deleted.</p> <p><b>Save:</b> Source on controller is overwritten and is also saved to "My Documents". If that source file already exists in My Documents you will be prompted to rename the source file, overwrite that file or not. If you do not rename or overwrite the file then the download to the controller will be canceled.</p> <p><b>Cancel:</b> Download is stopped.</p>
Different name		<p><b>OK:</b> Source on the controller will be replaced.</p> <p><b>Save:</b> Source on the controller will be saved to "My Documents" as above.</p> <p><b>Cancel:</b> Download is stopped.</p>

- You will be prompted with an alert if there is not sufficient space on the controller for the application. Clearing the User Data is one method to create more space on a PDMM or PCMM.

### TIP

The versions between the KAS IDE and the KAS Runtime must be the same if you want to be able to debug your application (for example to display the animated values in the editors).



### IMPORTANT

If the IDE version differs from the runtime after compiling an application, the function blocks defined in the IDE and those implemented in the virtual machine of the runtime can possibly be different. To prevent this potential mismatch, you must compile and download your application again.

**NOTE**

In addition to downloading the application to the controller's flash memory, you can download the project's source code, allowing you to store the project.

## 5.6 Device Control

You can start / stop the device with the buttons  and .

## 5.7 Operate the Control Panel

The Example program has a default control panel built-in to make it easy to start an application.

Perform the following steps to operate the control panel:

1. Double-click on **Control Panel** in the Project Explorer to open the form

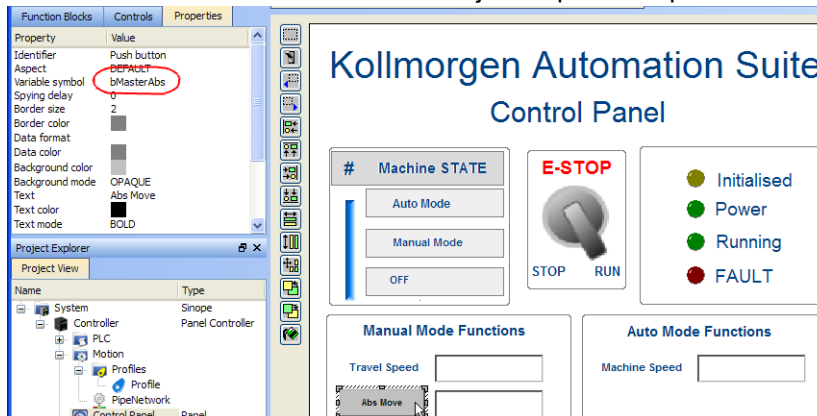
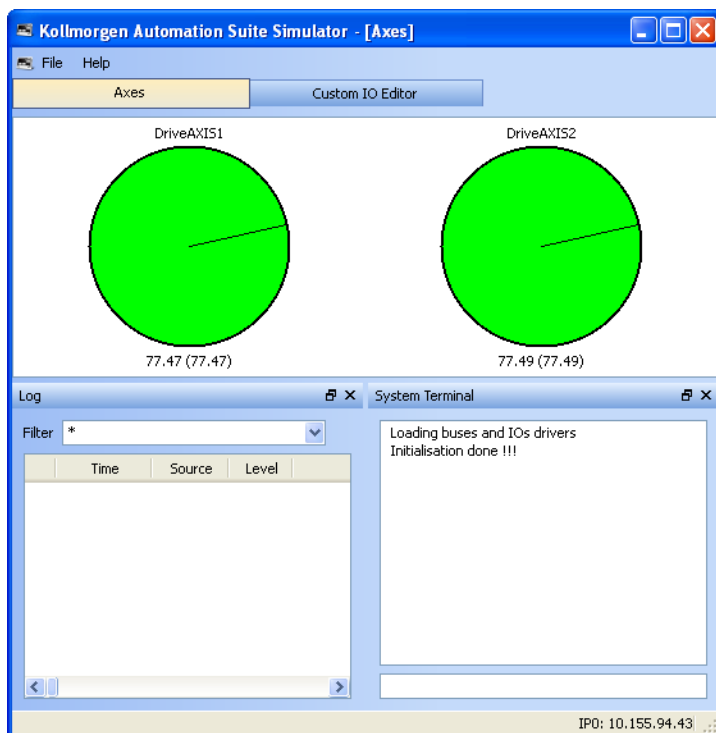


Figure 4-4: Control Panel

2. Start by moving the vertical slider bar to select the Machine STATE as **Manual Mode**
3. In the Manual Mode Functions area, double-click the text box for the Travel Speed
4. Enter the numeric value for the Travel Speed and press Enter

### 5.7.1 About KAS Simulator Display

The KAS Simulator displays the status and position of the axes. It also displays the log messages.




**Figure 4-5:** Display of KAS Simulator

You can continue to use the Control Panel to:

- Experiment with the controls and observe the simulated output
- Perform an absolute move by entering a position in the text box
- Perform a relative move

## 5.8 Exiting Simulation Mode

To exit Simulation mode, do as follows:

1. Click the Stop Device button 
2. Click the Disconnect Device button 

### NOTE

For additional information about Kollmorgen Automation Suite, see the following documentation:

- Getting Started
- User Manual
- Technical Reference - PLC Library
- Technical Reference - Motion Library
- Online Help

## About KOLLMORGEN

Kollmorgen is a leading provider of motion systems and components for machine builders. Through world-class knowledge in motion, industry-leading quality and deep expertise in linking and integrating standard and custom products, Kollmorgen delivers breakthrough solutions that are unmatched in performance, reliability and ease-of-use, giving machine builders an irrefutable marketplace advantage.



Join the [Kollmorgen Developer Network](#) for product support. Ask the community questions, search the knowledge base for answers, get downloads, and suggest improvements.

### North America

#### KOLLMORGEN

203A West Rock Road  
Radford, VA 24141  
USA

**Web:** [www.kollmorgen.com](http://www.kollmorgen.com)  
**Mail:** [support@kollmorgen.com](mailto:support@kollmorgen.com)  
**Tel.:** +1 - 540 - 633 - 3545  
**Fax:** +1 - 540 - 639 - 4162

### South America

#### KOLLMORGEN

Avenida Tamboré, 1077 Tamboré - Barueri - SP Brasil  
CEP: 06460-000

**Web:** [www.kollmorgen.com](http://www.kollmorgen.com)  
**Mail:** [support@kollmorgen.com](mailto:support@kollmorgen.com)  
**Tel.:** +55 11 4191-4771  
**Fax:** +1 - 540 - 639 - 4162

### Europe

#### KOLLMORGEN Europe GmbH

Pempelfurtstraße 1  
40880 Ratingen  
Germany

**Web:** [www.kollmorgen.com](http://www.kollmorgen.com)  
**Mail:** [technik@kollmorgen.com](mailto:technik@kollmorgen.com)  
**Tel.:** +49 - 2102 - 9394 - 0  
**Fax:** +49 - 2102 - 9394 - 3155

### China and SEA

#### KOLLMORGEN

Room 202, Building 3, Lane 168,  
Lin Hong Road, Changning District  
Shanghai

**Web:** [www.kollmorgen.cn](http://www.kollmorgen.cn)  
**Mail:** [sales.china@kollmorgen.com](mailto:sales.china@kollmorgen.com)  
**Tel.:** +86 - 400 661 2802  
**Fax:** +86 - 21 6128 9877